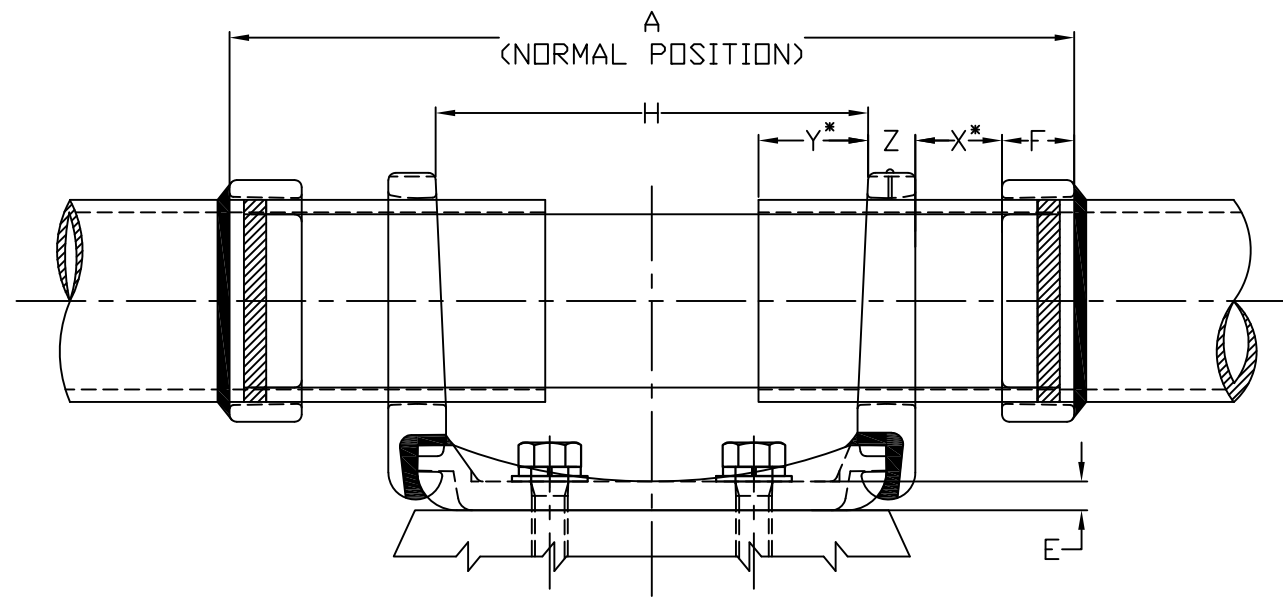
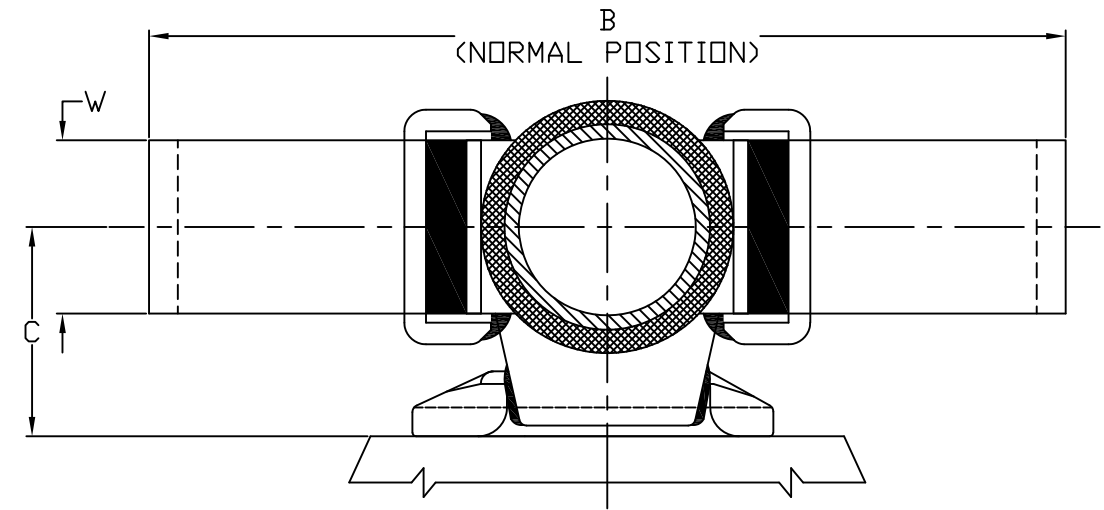


END PLUG
DETAIL
(SEE NOTE #2)



ELEVATION



END ELEVATION

| TOLERANCE CHART | | |
|-----------------------|-------|-----------------|
| LESS THAN 2" | 2"-6" | GREATER THAN 6" |
| ±.031 | ±.047 | ±.063 |
| ANGULAR TOLERANCE ±1° | | |

NOTE:

* FOR INSTALLATION INSTRUCTIONS
SEE ANDERSON DWG DC-6536

| | | | |
|-------|----------|--------|----------|
| 75318 | 8/9/2018 | RK | HG |
| EC # | DATE | CHG BY | RESP ENG |

ANDERSON®

HUBBELL® POWER SYSTEMS

DESC OF DWG:
REDDRAW IN AUTOCAD

REASON (S) FOR CHANGE: --
DISPOSITION OF MAT'L: --

CONFIDENTIAL: THIS DRAWING AND ITS CONTENTS ARE CONFIDENTIAL AND THE EXCLUSIVE PROPERTY OF HUBBELL POWER SYSTEMS. NO PUBLICATION, DISTRIBUTION OR COPIES MAY BE MADE WITHOUT THE WRITTEN CONSENT OF HUBBELL POWER SYSTEMS. HUBBELL POWER SYSTEMS UNPUBLISHED. ALL RIGHTS RESERVED UNDER THE COPYRIGHT LAWS.

| | | | |
|-------------------------------------------------------------|--------------------|-------------------------------|--------------|
| TITLE WELDED ALUMINUM BUS SUPPORT EXPANSION CONNECTOR | | | |
| SIZE D | DWG NO. CC-5410 | CAT / PART / ASSY NO. WURF | REV 40 |
| DO NOT SCALE THIS DRAWING | DRN BY RK | DATE 11/24/15 | SHEET 1 of 3 |

| CATALOG NUMBER | BOLT CIRCLE | BUS SIZE IPS | DIMENSIONS IN INCHES | | | | | | | | | | | CURRENT RATING | MAX . BUS LENGTH EACH SIDE |
|----------------|-------------|--------------|----------------------|--------|-------|-------|-----|--------|-------|-------|-------------|-------|---|----------------|----------------------------|
| | | | A | B | C | D | E | F | Z | H | K | T | W | | |
| WURF-20-3 | 3" | 2" | 11 | 12 3/8 | 2 3/4 | 4 1/4 | 3/8 | 1 1/4 | 3/4 | 5 | 9/16 X 3/4 | 5/16 | 3 | 1150 | 40 Ft |
| WURF-24-3 | 3" | 2 1/2" | 11 | 10 5/8 | 3 1/8 | 4 1/4 | 3/8 | 1 1/4 | 3/4 | 5 | 9/16 X 3/4 | 3/8 | 3 | 1550 | 40 Ft |
| WURF-30-3 | 3" | 3" | 11 | 13 3/8 | 3 5/8 | 4 1/4 | 3/8 | 1 1/4 | 13/16 | 4 7/8 | 9/16 X 3/4 | 1/2 | 3 | 1890 | 40 Ft |
| WURF-34-3 | 3" | 3 1/2" | 11 | 14 | 4 | 4 1/4 | 3/8 | 1 1/4 | 1 | 4 1/2 | 9/16 X 3/4 | 3/8 | 4 | 2170 | 40 Ft |
| WURF-40-3 | 3" | 4" | 11 | 14 3/4 | 4 1/2 | 4 1/4 | 3/8 | 1 1/4 | 1 | 4 1/2 | 9/16 X 3/4 | 1/2 | 4 | 2460 | 40 Ft |
| WURF-50-3 | 3" | 5" | 11 1/2 | 17 | 4 7/8 | 4 1/4 | 3/8 | 1 1/4 | 1 1/4 | 4 1/2 | 9/16 X 3/4 | 5/8 | 4 | 3080 | 40 Ft |
| WURF-50-5-5 | 5" | 5" | 16 | 18 5/8 | 5 | 6 1/4 | 1/2 | 1 1/4 | 1 1/4 | 7 5/8 | 11/16 X 7/8 | 5/8 | 4 | 3080 | 80 Ft |
| WURF-20-5 | 5" | 2" | 14 1/8 | 13 | 2 3/4 | 6 1/4 | 1/2 | 1 1/4 | 3/4 | 7 5/8 | 11/16 X 7/8 | 5/16 | 3 | 1150 | 80 Ft |
| WURF-24-5 | 5" | 2 1/2" | 14 1/8 | 12 7/8 | 3 1/8 | 6 1/4 | 1/2 | 1 1/4 | 3/4 | 7 5/8 | 11/16 X 7/8 | 3/8 | 3 | 1550 | 80 Ft |
| WURF-30-5 | 5" | 3" | 14 1/8 | 15 7/8 | 3 5/8 | 6 1/4 | 1/2 | 1 1/4 | 13/16 | 7 1/2 | 11/16 X 7/8 | 1/2 | 3 | 1890 | 80 Ft |
| WURF-34-5 | 5" | 3 1/2" | 14 1/8 | 14 3/8 | 4 | 6 1/4 | 1/2 | 1 1/4 | 1 | 7 1/8 | 11/16 X 7/8 | 3/8 | 4 | 2170 | 80 Ft |
| WURF-40-5 | 5" | 4" | 14 3/8 | 16 | 4 1/2 | 6 1/4 | 1/2 | 1 1/4 | 1 1/4 | 6 7/8 | 11/16 X 7/8 | 1/2 | 4 | 2460 | 80 Ft |
| WURF-50-5 | 5" | 5" | 14 3/8 | 18 1/8 | 4 1/8 | 6 1/4 | 1/2 | 1 1/4 | 1 1/4 | 6 7/8 | 11/16 X 7/8 | 5/8 | 4 | 3080 | 80 Ft |
| WURF-60-5 | 5" | 6" | 14 7/8 | 19 1/4 | 5 3/8 | 6 1/4 | 1/2 | 1 1/4 | 1 1/2 | 6 5/8 | 11/16 X 7/8 | 3/4 | 4 | 3750 | 80 Ft |
| WURF-20-7 | 7" | 2" | 17 1/2 | 15 | 2 3/4 | 8 1/2 | 1/2 | 1 1/4 | 3/4 | 10 | 13/16 X 1 | 5/16 | 3 | 1150 | 120 Ft |
| WURF-24-7 | 7" | 2 1/2" | 17 1/2 | 15 1/4 | 3 1/8 | 8 1/2 | 1/2 | 1 1/4 | 3/4 | 10 | 13/16 X 1 | 3/8 | 3 | 1550 | 120 Ft |
| WURF-30-7 | 7" | 3" | 17 1/2 | 15 3/4 | 3 5/8 | 8 1/2 | 1/2 | 1 1/4 | 13/16 | 9 7/8 | 13/16 X 1 | 1/2 | 3 | 1890 | 120 Ft |
| WURF-34-7 | 7" | 3 1/2" | 17 1/2 | 15 1/4 | 4 | 8 1/2 | 1/2 | 1 1/4 | 1 | 9 1/2 | 13/16 X 1 | 3/8 | 4 | 2170 | 120 Ft |
| WURF-40-7 | 7" | 4" | 17 3/4 | 19 3/8 | 4 1/2 | 8 1/2 | 1/2 | 1 1/4 | 1 1/4 | 9 1/4 | 13/16 X 1 | 1/2 | 4 | 2460 | 120 Ft |
| WURF-50-7 | 7" | 5" | 17 3/4 | 21 1/4 | 4 7/8 | 8 1/2 | 1/2 | 1 1/4 | 1 1/4 | 9 1/4 | 13/16 X 1 | 5/8 | 4 | 3080 | 120 Ft |
| WURF-34-5-5 | 5" | 3 1/2" | 18 1/8 | 12 | 5 | 6 1/4 | 1/2 | 2 7/16 | 1 1/4 | 7 5/8 | 9/16 X 7/8 | 5/8 | 4 | 2170 | |
| WURF-60-7 | 7" | 6" | 18 1/4 | 23 3/4 | 5 3/8 | 8 1/2 | 1/2 | 1 1/4 | 1 1/2 | 9 1/4 | 13/16 X 1 | 3/4 | 4 | 3750 | 120 Ft |
| WURF-60-7-TVA | 7" | 6" | 17 3/8 | 24 1/2 | 5 3/8 | 8 1/2 | 1/2 | 1 1/4 | 1 1/2 | 9 7/8 | 13/16 X 1 | 1 1/8 | 4 | 4300 | |
| **WURFH-40-3-5 | 3" | 4" EHIPS | 15 5/16 | 13 1/8 | 5 | 4 1/4 | 1/2 | 1 1/4 | 1 | 5 | 9/16 X 3/4 | 3/4 | 4 | 3000 | |
| WURFH-40-5-5 | 5" | 4" EHIPS | 14 3/8 | 16 | 5 | 6 1/4 | 1/2 | 1 1/4 | 1 1/4 | 6 7/8 | 11/16 X 7/8 | 5/8 | 4 | 2880 | 80 Ft |

NOTES:

- FOR INSTALLATION TEMPERATURE SEE DWG DC-6536.
- WELDMENT END PLUGS WILL BE FURNISHED IF DESIRED , ADD "EP" TO CATALOG NUMBER.(EXAMPLE:WURE-40-5-EP)
IN THIS CASE "I" DIMENSION WILL BE CLEARANCE FROM END PLUG TO END PLUG. WELDS MUST BE GROUND SMOOTH TO TUBULAR BUS DIAMETER. (END PLUGS-356T6 ALUM ALLOY)
- CONNECTOR MATERIAL - 356T6 ALUM ALLOY.
- REGULARLY SUPPLIED WITH GALVANIZED STEEL CAP SCREWS,LOCKWASHERS, AND FLATWASHERS FOR MOUNTING TO CAP OF INSULATOR. WHEN BASE MOUNTING IS REQUIRED ADD SUFFIX "B" TO CATALOG NUMBER TO ASSURE OBTAINING BOLTS, NUTS, LOCKWASHERS AND FLAT WASHERS. (EXAMPLE:WURF-34-5-8)
- SPRING MATERIAL - STAINLESS STEEL.

* * ITEM FURNISHED WITH 1/2" THICK SPACERS TO MAKE "C" DIMENSION "5".

* CONDUCTOR ,OUTDOORS,FOR A 30°C RISE OVER A 40°C AMBIENT WITH A 2 Ft/SEC CROSSWIND BASED ON ASA SCHEDULE 40 ALUMINIUM PIPE CONDUCTORS.

| TOLERANCE CHART | | |
|-----------------------|-------|-----------------|
| LESS THAN 2" | 2"-6" | GREATER THAN 6" |
| ±.031 | ±.047 | ±.063 |
| ANGULAR TOLERANCE ±1' | | |

| | | | |
|-----------------------------------|----------|--------|----------|
| 75318 | 8/9/2018 | RK | HG |
| EC # | DATE | CHG BY | RESP ENG |
| DESC OF DWG: REDRAW IN AUTOCAD | | | |
| REASON (S) FOR CHANGE: -- | | | |
| DISPOSITION OF MAT'L: -- | | | |

ANDERSON®

HUBBELL® POWER SYSTEMS

WELDED ALUMINUM BUS
SUPPORT EXPANSION CONNECTOR

| | | | |
|------|---------|-----------------------|-----|
| SIZE | DWG NO. | CAT / PART / ASSY NO. | REV |
| D | CC-5410 | WURF | 40 |

DO NOT SCALE THIS DRAWING

CONFIDENTIAL: THIS DRAWING AND ITS CONTENTS ARE CONFIDENTIAL AND THE EXCLUSIVE PROPERTY OF HUBBELL POWER SYSTEMS. NO PUBLICATION, DISTRIBUTION OR COPIES MAY BE MADE WITHOUT THE WRITTEN CONSENT OF HUBBELL POWER SYSTEMS. HUBBELL POWER SYSTEMS UNPUBLISHED. ALL RIGHTS RESERVED UNDER THE COPYRIGHT LAWS.

DRN BY RK DATE 11/24/15 SHEET 2 of 3

| CATALOG NUMBER | BOLT CIRCLE | BUS SIZE IPS | DIMENSIONS IN INCHES | | | | | | | | | | | CURRENT RATING | MAX. BUS LENGTH EACH SIDE |
|------------------|-------------|------------------|----------------------|----------|-------|-------|-----|-------|--------|--------|-------------|-------|-------|----------------|---------------------------|
| | | | A | B | C | D | E | F | Z | H | K | T | W | | |
| WURFH-40-5-5-EP | 5" | 4" EHIPS | 14 3/8 | 16 | 5 | 6 1/4 | 1/2 | 1 1/4 | 1 1/4 | 6 7/8 | 11/16 X 7/8 | 5/8 | 4 | 2880 | 80 Ft |
| WURFH-40-5 | 5' | 4" EHIPS | 14 3/8 | 16 | 4 1/2 | 6 1/4 | 1/2 | 1 1/4 | 1 1/4 | 6 7/8 | 11/16 X 7/8 | 5/8 | 4 | 3000 | 80 Ft |
| WURFH-40-5-BGE-3 | 5' | 4" EHIPS | 25 1/2 | 25 3/16 | 4 1/2 | 6 1/4 | 1/2 | 1 1/4 | 1 1/4 | 14 | 11/16 X 7/8 | 5/8 | 4 | 3000 | |
| WURF-50-5-BGE-4 | 5' | 5" | 31 1/2 | 31 | 4 7/8 | 6 1/4 | 1/2 | 1 1/4 | 1 1/4 | 18 | 11/16 X 7/8 | 5/8 | 4 | 3000 | |
| WURF-50-5-BGE-2 | 5" | 5" | 19 1/2 | 20 5/8 | 4 7/8 | 6 1/4 | 1/2 | 1 1/4 | 1 1/4 | 10 | 11/16 X 7/8 | 5/8 | 4 | 3000 | |
| WURFH-34-5-BGE-2 | 5" | 3 1/2" EHIPS | 19 1/2 | 18 3/16 | 4 | 6 1/4 | 1/2 | 1 1/4 | 1 1/4 | 10 | 11/16 X 7/8 | 5/8 | 4 | 3000 | |
| WURF-60-5-5-EP | 5" | 6" | 15 1/8 | 19 1/2 | 5 | 6 1/4 | 1/2 | 1 1/4 | 1 1/2 | 7 5/8 | 11/16 X 7/8 | 1 1/8 | 4 | 6300 | |
| WURF-44-5-5 1/4 | 5" | 4 1/2" | 15 3/4 | 17 13/16 | 5 1/4 | 6 1/4 | 1/2 | 1 1/4 | 1 1/4 | 7 1/4 | 11/16 X 7/8 | 1/2 | 4 | 2750 | |
| WURFH-50-5 | 5" | 5" EHIPS | 14 3/8 | 17 5/8 | 4 7/8 | 6 1/4 | 1/2 | 1 1/4 | 1 1/4 | 6 7/8 | 11/16 X 7/8 | 3/4 | 4 | 3640 | 80 Ft |
| WURF-44-5 | 5" | 4 1/2" | 14 3/8 | 17 13/16 | 4 3/4 | 6 1/4 | 1/2 | 1 1/4 | 1 1/4 | 7 1/4 | 11/16 X 7/8 | 1/2 | 4 | 2750 | |
| WURFH-30-3 | 3" | 3" EHIPS | 11 | 13 5/8 | 3 5/8 | 4 1/4 | 3/8 | 1 1/4 | 13/16 | 4 7/8 | 9/16 X 3/4 | 9/16 | 3 | 2190 | 40 Ft |
| WURFH-30-5 | 5" | 3" EHIPS | 14 1/8 | 17 5/8 | 3 5/8 | 6 1/4 | 3/8 | 1 1/4 | 25/32 | 7 1/16 | 11/16 X 7/8 | 9/16 | 3 | 2350 | |
| WURF-14-3 | 3" | 1 1/2" | 11 | 13 1/8 | 2 1/2 | 4 1/4 | 3/8 | 1 1/4 | 3/4 | 5 | 9/16 X 3/4 | 3/8 | 2 | 925 | 40 Ft |
| WURF-40-5-5 | 5" | 4" | 14 3/8 | 17 | 5 | 6 1/4 | 1/2 | 1 1/4 | 1 1/4 | 6 7/8 | 11/16 X 7/8 | 1/2 | 4 | 2460 | 80 Ft |
| WURF-40-5-5-PEC | 5" | 4" | 14 3/8 | 17 | 5 | 6 1/4 | 1/2 | 1 1/4 | 1 1/4 | 6 7/8 | 11/16 X 7/8 | 3/4 | 4 | 3000 | 80 Ft |
| WURFH-60-5 | 5" | 6" EHIPS | 14 7/8 | 19 5/8 | 5 3/8 | 6 1/4 | 1/2 | 1 1/4 | 1 1/2 | 6 7/8 | 11/16 X 7/8 | 7/8 | 4 | 4490 | |
| WURFH-34-5 | 5" | 3 1/2" EHIPS | 14 1/8 | 15 11/16 | 4 | 6 1/4 | 1/2 | 1 1/4 | 1 | 7 1/8 | 11/16 X 7/8 | 1/2 | 4 | 2530 | 80 Ft |
| WURF-8-DD-5 | 5" | 8" O.D.TUBE | 22 | 21 | 6 1/4 | 6 1/4 | 3/4 | 1 1/4 | 2 | 10 1/4 | 11/16 X 7/8 | 7/8 | 6 | 7200 | |
| WURFH-8-DD-IEP | 7" | 8" O.D | 24 | 21 | 6 1/4 | 8 1/2 | 3/4 | 1 1/4 | 2 | 12 1/4 | 13/16 X 1 | 3/4 | 6 | 6000 | |
| WURFH-30-7-EP | 7" | 3" EHIPS | 17 1/2 | 14 3/4 | 3 5/8 | 8 1/2 | 1/2 | 1 1/4 | 2 5/32 | 8 5/8 | 13/16 X 1 | 9/16 | 3 | 2350 | |
| WURF-8-DD-7-TVA | 7" | 8" O.D | 20 1/2 | 24 1/8 | 7 1/2 | 8 1/2 | 5/8 | 1 1/4 | 2 | 10 1/2 | 13/16 X 1 | 1 | 6 | 8400 | |
| WURFH-50-7 | 7" | 5" EHIPS | 17 3/4 | 21 | 4 7/8 | 8 1/2 | 1/2 | 1 1/4 | 1 | 9 1/4 | 13/16 X 1 | 3/4 | 4 | 3640 | |
| WURFH-60-7 | 7" | 6" EHIPS | 18 1/4 | 21 1/4 | 5 3/8 | 8 1/2 | 1/2 | 1 1/4 | 1 1/2 | 9 1/4 | 13/16 X 1 | 7/8 | 4 | 4490 | 120 Ft |
| WURF-8-DD-1/2-7 | 7" | 8" O.D 1/2" WALL | 19 1/4 | 24 1/4 | 6 1/4 | 8 1/2 | 5/8 | 2 1/2 | 2 | 9 1/4 | 13/16 X 1 | 1 | 4 | 5000 | 120 Ft |
| WURFH-24-5 | 5" | 2 1/2" EHIPS | 14 1/8 | 14 3/4 | 3 1/8 | 6 1/4 | 1/2 | 1 1/4 | 3/4 | 7 5/8 | 11/16 X 7/8 | 7/16 | 3 | 1780 | 100 Ft |
| WURF-8-DD-5-DP | 5" | 8" O.D | 16 1/4 | 24 | 6 3/8 | 6 1/4 | 5/8 | 1 1/4 | 2 | 7 1/4 | 11/16 X 7/8 | 1 | 4 | 5000 | 80 Ft |
| WURFH-10-3 | 3" | 1" EHIPS | 11 | 11 1/8 | 2 | 4 1/4 | 3/8 | 2 | 3/4 | 5 | 9/16 X 3/4 | 3/8 | 1 1/2 | 740 | 40 Ft |
| WURF-60-3 | 3" | 6" | 12 | 17 3/8 | 5 3/8 | 4 1/2 | 3/8 | 1 1/4 | 1 1/2 | 4 1/2 | 9/16 X 3/4 | 3/4 | 4 | 3750 | 40 Ft |
| WURFH-40-7 | 7" | 4" EHIPS | 17 3/4 | 18 1/4 | 4 1/2 | 8 1/2 | 1/2 | 1 1/4 | 1 1/4 | 9 1/4 | 13/16 X 1 | 5/8 | 4 | 2880 | 120 Ft |
| WURF-14-5 | 5" | 1 1/2"IPS | 14 1/8 | 12 1/4 | 2 1/2 | 6 1/4 | 1/2 | 1 1/4 | 3/4 | 7 1/8 | 11/16 X 7/8 | 3/8 | 2 | 925 | 80 Ft |
| WURFH-60-3 | 3" | 6" EHIPS | 12 | 18 1/4 | 5 3/8 | 4 1/2 | 3/8 | 1 1/4 | 1 1/2 | 4 1/2 | 9/16 X 3/4 | 7/8 | 4 | 4490 | 40 Ft |
| WURF-10-3 | 3" | 1" IPS | 11 | 11 1/8 | 2 | 4 1/4 | 3/8 | 2 | 3/4 | 5 | 9/16 X 3/4 | 3/8 | 1 1/2 | 740 | 40 Ft |
| WURFH-40-3 | 3" | 4" EHIPS | 11 | 14 3/4 | 4 1/2 | 4 1/4 | 3/8 | 1 1/4 | 1 | 4 1/2 | 9/16 X 3/4 | 5 | 4 | 3000 | 40 Ft |



△ -"PEC" SUFFIX INCLUDES END PLUGS.

| TOLERANCE CHART | | |
|-----------------------|-------|-----------------|
| LESS THAN 2" | 2"-6" | GREATER THAN 6" |
| ±.031 | ±.047 | ±.063 |
| ANGULAR TOLERANCE ±1' | | |

| | | | |
|-----------------------------------|----------|--------|----------|
| 75318 | 8/9/2018 | RK | HG |
| EC # | DATE | CHG BY | RESP ENG |
| DESC OF DWG: REDRAW IN AUTOCAD | | | |
| REASON (S) FOR CHANGE: -- | | | |
| DISPOSITION OF MAT'L: -- | | | |

ANDERSON®
CONFIDENTIAL- THIS DRAWING AND ITS CONTENTS ARE CONFIDENTIAL AND THE EXCLUSIVE PROPERTY OF HUBBELL POWER SYSTEMS. NO PUBLICATION, DISTRIBUTION OR COPIES MAY BE MADE WITHOUT THE WRITTEN CONSENT OF HUBBELL POWER SYSTEMS. HUBBELL POWER SYSTEMS UNPUBLISHED. ALL RIGHTS RESERVED UNDER THE COPYRIGHT LAWS.

| | |
|--------------------------------------------------------|--------------------------------------|
| HUBBELL® POWER SYSTEMS | |
| TITLE: WELDED ALUMINUM BUS SUPPORT EXPANSION CONNECTOR | |
| SIZE: D | DWG NO: CC-5410 |
| CAT / PART / ASSY NO: WURF | REV: 40 |
| DO NOT SCALE THIS DRAWING | DRN BY RK DATE 11/24/15 SHEET 3 of 3 |